

**MATERIAL
HANDLERS**
FROM 60UP
TO 350 TONS



@MULTIDOCKER   
WWW.MULTIDOCKER.COM

**OUR VERSATILE
MATERIAL HANDLERS**

VERSATILE GANTRIES



Our gantry undercarriage is designed for quick and efficient loading and unloading of transport carriers. With this design, a transport carrier can easily pass beneath the material handler, meaning it only needs to make a 90-degree turn instead of the usual 180-degree turn.

This streamlined movement helps save time and boosts productivity, making it an ideal choice for busy environments such as ports and terminals where efficiency is key.

MOBILE SOLUTIONS

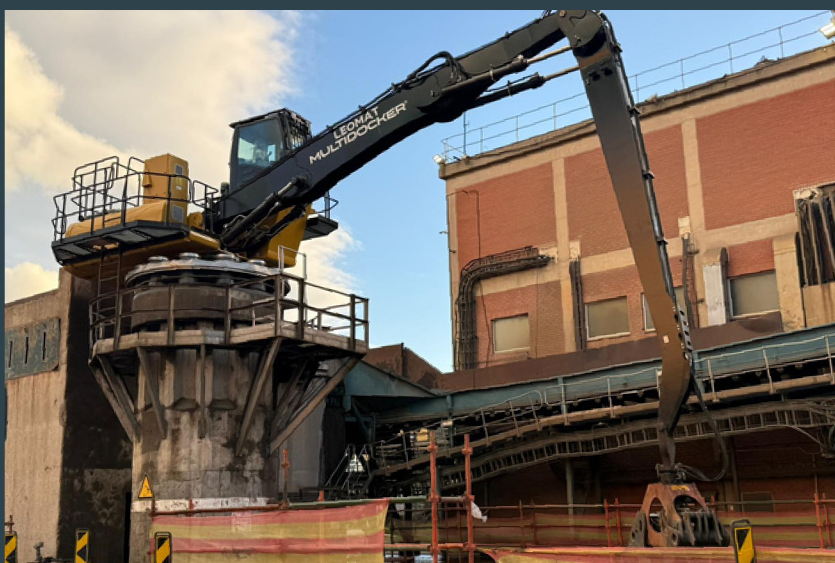


Our mobile solutions are perfect for handling large amounts of cargo while maintaining excellent mobility. This is especially useful in large areas, as the machines can easily move wherever needed.

The mobile material handlers are available with 4-wheel drive rubber tyres, with the option of solid tyres for even more durability and versatility in various working conditions.

MATERIAL HANDLERS
FROM 60 UP TO 350 TONS

ELECTRIC MACHINES



Material handlers can be built diesel-driven, electric, or dual-drive, providing the ideal power for every operation. Electric systems offer lower maintenance, higher performance with stronger motors, and an even longer lifespan.

The Variable Frequency Drive system ensures smooth, variable-speed control with continuous monitoring for overload, short circuits, and ground faults, delivering safe, reliable operation with a greener impact.

@MULTIDOCKER   

WWW.MULTIDOCKER.COM

MATERIAL HANDLERS

We manufacture a diverse range of material handlers ranging from 60 to 350 tons. Each machine is designed around the base of a reliable Caterpillar excavator and fully customized to meet your operational needs, from undercarriage and cabin to boom and stick.

This modular approach ensures outstanding reliability, high efficiency, and maximum uptime across all types of industries, and terminals worldwide.

ELECTRIC CONVERSION TECHNOLOGY

Besides building new machines, MultiDockers offers sustainable solutions by converting existing diesel-powered machines from various brands to fully electric power or dual-drive. Our electric motors are powerful, quiet, and completely emission-free. An innovative step toward a cleaner future in the material handling industry.

With our advanced conversion technology, we can electrify almost any existing machine, transforming traditional diesel-driven equipment into dually or fully electric powerhouses. This provides a more energy-efficient, sustainable, and environmentally friendly way to handle heavy cargo operations.

we're proud partner of:



Ganterud Lifting Solutions is specialized in manufacturing electric levellers. Their unique remote-operated levellers simplify safe lifting of imbalanced objects, ensuring faster, efficient operations and cost savings.



Tralert LED Lights, known for high-lumen vehicle luminaires, illuminates dark areas or project sites. MultiDockers machines incorporate Tralert lighting for improved visibility around material handlers, ensuring safety and efficiency.



Xwatch specializes in safety solutions for machines and operators, providing forward-thinking integration and user-friendly hardware. Our machines can be equipped with the Xwatch overload system, prioritizing safety for operators and machine.



MultiDocker is a leading global manufacturer of highly versatile and customizable cargo handling machines, integrating reliable Caterpillar components. Our material handlers, designed for ports and industries, boast exceptional operational reliability and extended service life, supported by the CAT service network for global assistance.

Our goal is to establish ourselves as a top international manufacturer of customizable material handlers. Additionally, we are experts in converting diesel-powered machines to exclusive electric power across various brands.

Driven by our roots as former dock operators and a continuous drive for innovation, we understand what it takes to keep port operations running smoothly.

From our headquarters in Terneuzen, we use that hands-on experience to create strong, reliable machines that make cargo handling more efficient every day.

visit us at: _____

HQ - The Netherlands

Nijverheidsstraat 31
4538 AX Terneuzen



+31 (0)115 745 072 📞
INFO@MULTIDOCKER.COM ✉️
WWW. MULTIDOCKER.COM 🌐