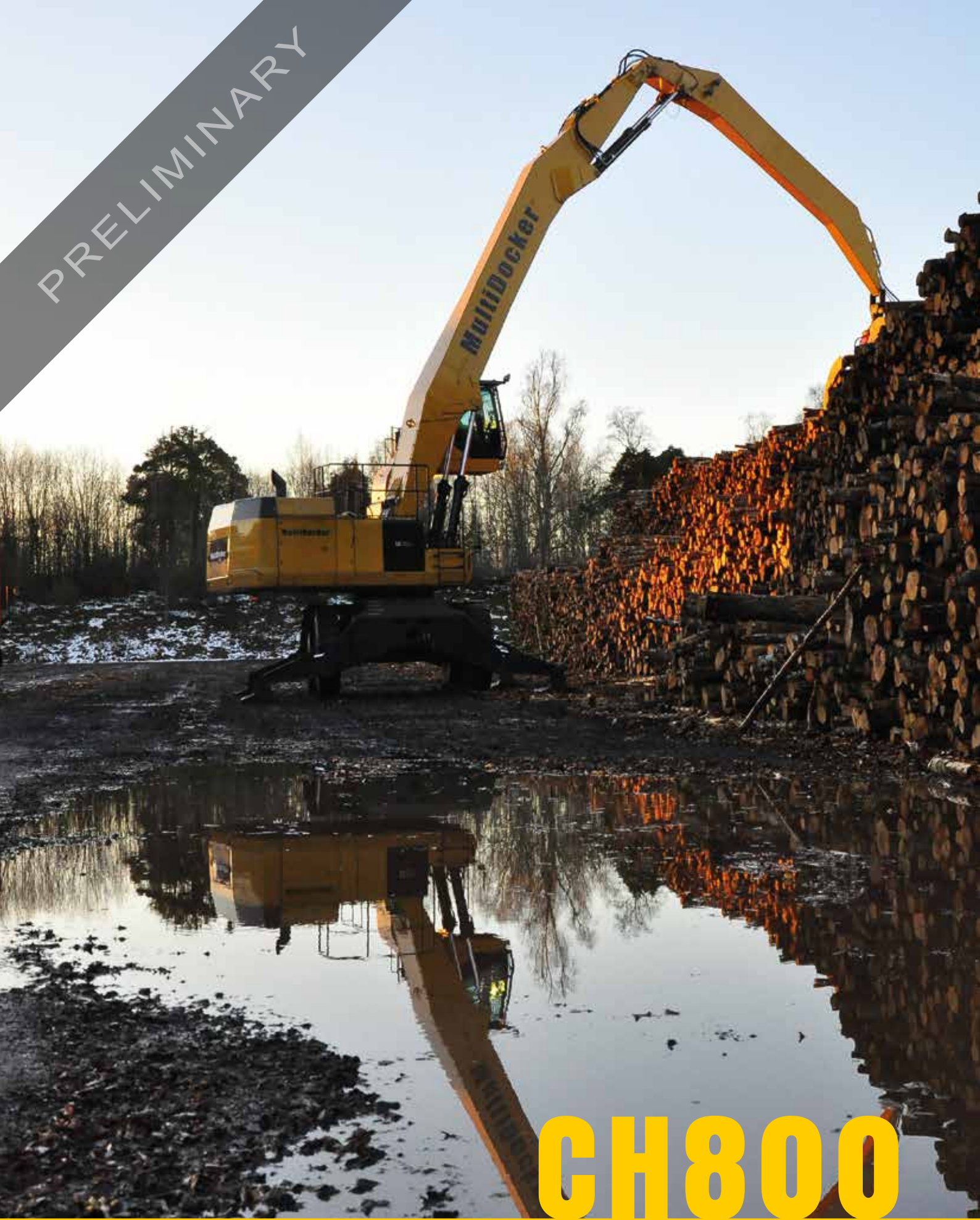


PRELIMINARY



# CH800

**MultiDocker**<sup>®</sup>  
+

ENGINE OUTPUT: 311 KW / 417HP  
WEIGHT: 138 000 - 145 000 lbs  
REACH: 59 - 69 ft

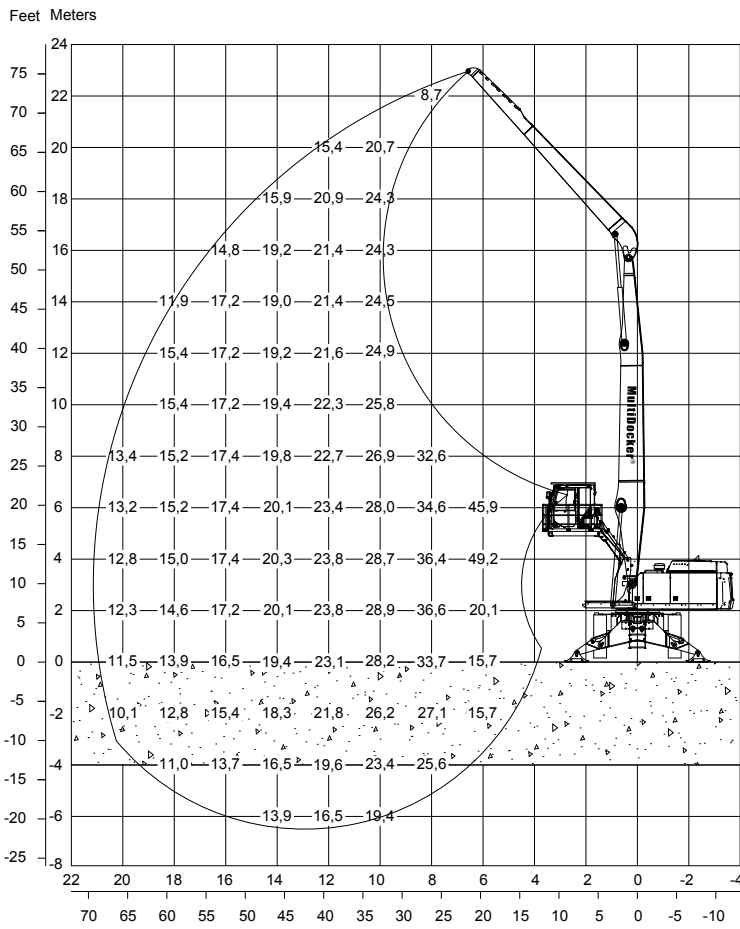
# TECHNICAL DATA

## CH800F

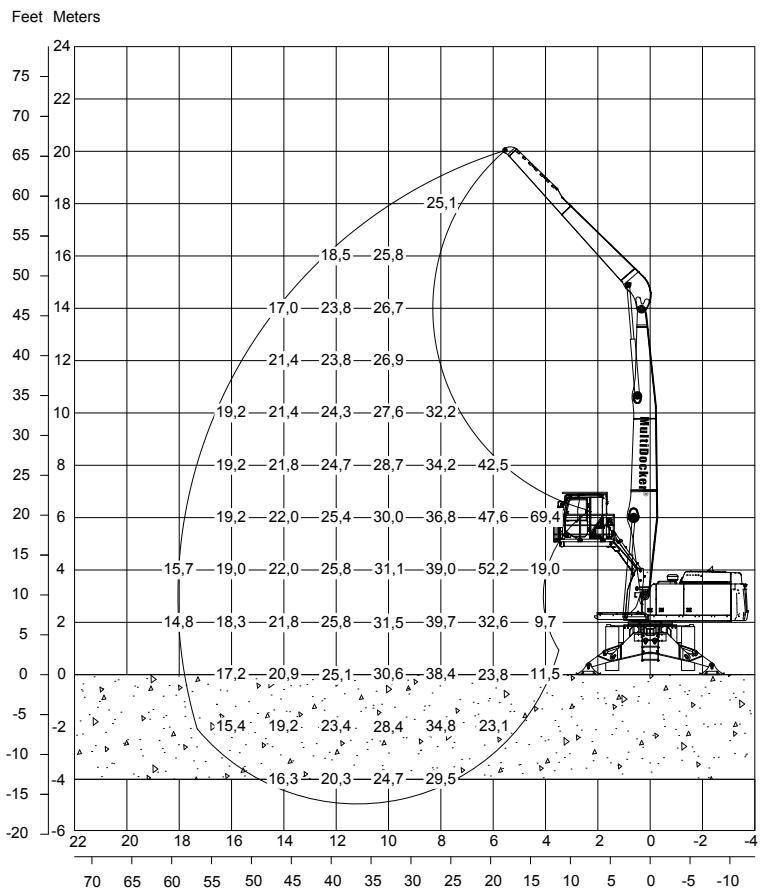
Base information	Base machine (Caterpillar)	352F MH
	Weight (lbs)	138 000 - 145 000
	Maximum reach (ft)	69
Engine (diesel)	Model (Caterpillar)	C13 ACERT Stage IV
	Net power (kW/hp)	311 / 417
	Bore (in)	5.12
	Stroke (in)	6.18
	Piston displacement (in <sup>3</sup> )	763
Hydraulic system	Max. flow, working pumps (gal/min)	205.4
	Max. flow, swing pump (gal/min)	1017
	Max. pressure, main circuit (psi)	5512
	Max. swing (psi)	3989
Undercarriage	Wheel based	Multidocker CH800F
	Stabilizers	4 point outriggers, base plate 2.3ft x 2.3ft
	Axles (no)	2
	Axles (front)	Oscillating (lockable)
	Axles (rear)	Rigid mounted
	Tires	16.00 - 25. Solut tires as an option
	Drive	4 wheel drive with planetaryhub, cardan shafts and central gear
	Brakes	Hydraulic brake system with parking brake
	Max. speed (mph)	5.6
Volumes	Fuel tank (gal)	190
	Cooling system (gal)	13
	Engine crank case (gal)	17
	Swing drive – drive (gal) (each)	2.64
	Hydraulic system incl. tank (gal)	151
	Hydraulic oil tank (gal)	108
	Weight main components	Base machine incl. swing bearing (lbs)
Cabin Elevator Industrial CEI (lbs)		5750
Counterweight (lbs)		33 000
Undercarriage (lbs)		50 700



# LIFTING DIAGRAMS



## 59 ft



Lifting capacity table, unit tonne = 1 000 lbs  
 The lifting capacities are measured at 360° in the stick end-joint. The above values have been calculated in compliance with ISO 10567:2007. They do not exceed 87 % of the hydraulic lifting capacity or 75 % of the tipping load, with the machine in firm, level ground.



# GET'S THE JOB DONE!



We didn't invent the MultiDock and start the company to make money. We invented the MultiDock to do a job, for us. Because we were dock-operators ourselves, we knew just what's needed. We sat down and said to ourselves: if we could invent exactly the right machines to do the jobs we need, what would it look like? How would it work?

And with a long process of experimentation, we devised the MultiDock CH - a machine that's mostly standard, tried- and-tested, ultra-reliable Caterpillar components. We wanted high efficiency, fast performance, faultless reliability, high machine availability and a long Low-cost working life. So we built it, and it worked. Over the years we have developed the products Further and increased our portfolio and our number of partners. Today we are proud to offer world leading products and services to customers in many industries all over the world.

**WELCOME TO CONTACT US** or visit our website for more information!

MultiDock Cargo Handling AB  
Saltångsgatan 15  
SE-602 22 Norrköping, Sweden

Phone +46 (0)11 450 30 00  
E-mail: [info@multidocker.com](mailto:info@multidocker.com)  
Web: [www.multidocker.com](http://www.multidocker.com)

**MultiDock®**